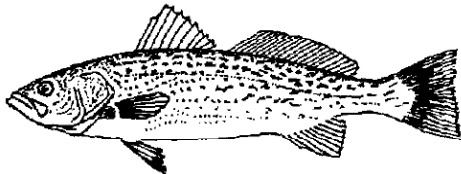


# Saltwater Regulations

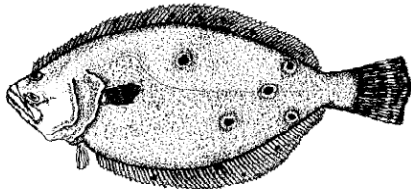
This Revision Dated 8/27/10  
 ✱ = Anticipated changes in 2010

## 2010 NJ Minimum Size, Possession Limits & Seasons

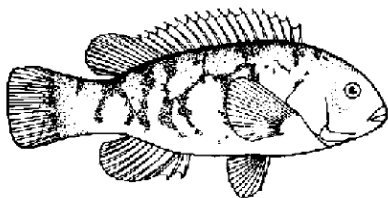
Fish are measured from tip of snout to tip of tail (except Black Sea Bass)  
 Cleaning/filleting of fish with a minimum size limit while at sea is prohibited,  
 With the exception of strips taken off one fluke per day to be used THAT day as bait.



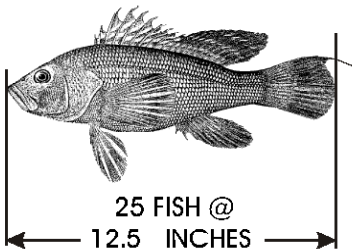
**Weakfish** 1 Fish at 13 inches  
 Jan 1 - Dec 31



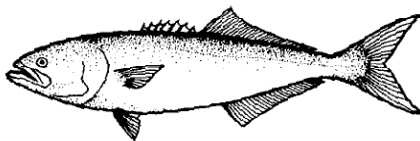
**Summer Flounder (Fluke)**  
 6 Fish at 18 inches  
 Open Season: May 29 - Sept. 6



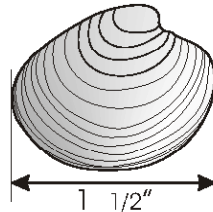
**Tautog** 14 inches  
 4 fish: Jan. 1 - Apr. 30  
 1 fish: Jul. 16 - Nov. 15  
 6 fish: Nov 16 - Dec 31



**Black Sea Bass**  
 25 FISH @ 12.5 INCHES  
 Open Season: May 22 - Oct 11;  
 Nov 1 - Dec 31



**Bluefish**  
 15 fish no minimum size  
 Open Season: Jan. 1 - Dec. 31



**Hard Clam**  
 recreational limit - 150 clams  
 No harvest on Sunday  
 License required

## HOW TO MEASURE STRIPED BASS

Close mouth, pinch tail to get maximum length. Make sure tape/ruler is FLAT, arching over the fish can add an inch that isn't there!

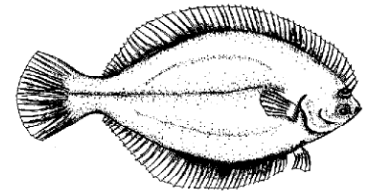


**Striped Bass or Hybrid Striped Bass**  
 2 fish at 28" or greater

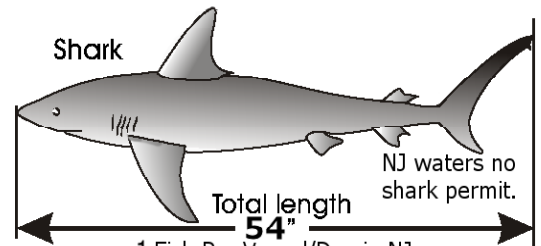
Del. River & tribs. (Rt. 1 Bridge); Trenton, to Salem River & tribs  
 Open Mar. 1 - Mar. 31 & June 1 - Dec. 31

Atlantic Ocean (0-3 miles from shore), no closed season  
 (Greater than 3 miles from shore), closed

All other marine waters, open Mar. 1 - Dec. 31



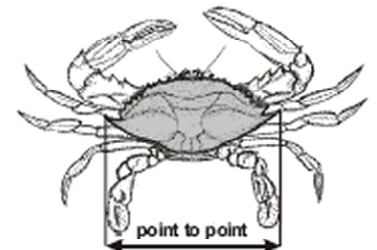
**Winter Flounder**  
 2 fish at 12 inches  
 Open Season: March 23 - May 21



**Shark**  
 Total length 54"  
 1 Fish Per Vessel/Day in NJ  
 Shark Seasons - See Marine Digest  
 NJ waters no shark permit.

**PROHIBITED SPECIES**  
 It is illegal to take, possess or land any of the following species:  
**IN NJ Waters:** Shortnose & Atlantic Sturgeon, Basking, Bigeye Sand Tiger, Sand Tiger, Whale & White Sharks  
**Prohibited Sharks in Federal Waters:**  
 HMS Permit REQUIRED - permit holders must follow Federal Regs for ALL WATERS  
 Atlantic Angel, Basking, Bigeye Sand Tiger, Sand Tiger, Bigeye Thresher, Bigeye sixgill, Bignose, Caribbean Reef, Caribbean sharpnose, Dusky, Galapagos, Longfin mako, Narrowtooth, Night, Sandbar (Brown Shark), Sevengill, Silky, Sixgill, Smalltail, Whale & White Sharks

OTHER SPECIES	POSSESSION LIMIT	TOTAL LENGTH
AMERICAN EEL	50	6"
BLACK DRUM	3	16"
COBIA	2	37"
COD	NO LIMIT	21"
HADDOCK	NO LIMIT	21"
KING MACKEREL	3	23"
POLLOCK	NO LIMIT	19"
RED DRUM	1	18" - 27"
SCUP (PORGY)	50	9"
Open Season Scup (Porgy) Jan. 1 - Feb. 28 and July 1 - Dec. 31		
SHAD	6	NO LIMIT
SPANISH MACKEREL	10	14"
LOBSTER	6	3 3/8" - 5 1/4"
CARAPACE LENGTH		



**Blue Crab (point to point)**  
 peeler or shedder - 3 inches  
 soft - 3 1/2 inches  
 hard - 4 1/2 inches  
 recreational limit - one bushel

Crab pot/Trotline Seasons:  
 Delaware Bay & Tributaries  
 April 6 - Dec. 4

All other waters  
 March 15 - Nov. 30



NEW JERSEY DEPARTMENT OF ENVIRONMENTAL PROTECTION  
[www.state.nj.us/dep/](http://www.state.nj.us/dep/)



NEW JERSEY DIVISION OF Fish and Wildlife  
[www.njfishandwildlife.com](http://www.njfishandwildlife.com)

**Scott's Bait & Tackle**  
 945 Radio Road  
 Tuckerton NJ 08087  
 (609) 296-1300

[www.pennparts.com](http://www.pennparts.com)  
[www.scottsbait.com](http://www.scottsbait.com)