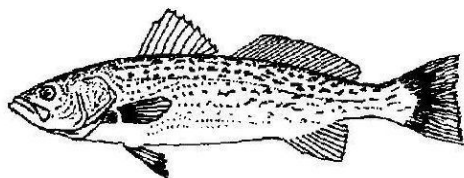


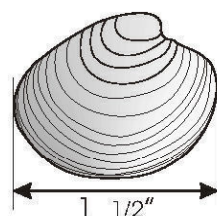
Saltwater Regulations

2013 NJ Minimum Size, Possession Limits & Seasons

Fish are measured from tip of snout to tip of tail (except Black Seabass & Sharks)
 Cleaning/filleting of fish with a minimum size limit while at sea is prohibited,
 With the exception of strips taken off one fluke per day to be used THAT day as bait.



Weakfish 1 Fish at 13 inches
Jan 1 - Dec 31

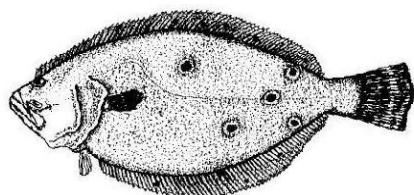


Hard Clam
 recreational limit - 150 clams
 No harvest on Sunday
 Shellfish License Required

HOW TO MEASURE STRIPED BASS Close mouth, pinch tail to get maximum length. Make sure tape/ruler is FLAT, arching over the fish can add an inch that isn't there!



Striped Bass or Hybrid Striped Bass
 2 fish at 28" or greater



Summer Flounder (Fluke)
 5 fish at 17.5 inches
 May 18 - Sept 16

Del. River & tribs. (Rt. 1 Bridge); Trenton, to Salem River & tribs
 Open Mar. 1 - Mar. 31 & June 1 - Dec. 31

Atlantic Ocean (0-3 miles from shore), no closed season
 (Greater than 3 miles from shore), closed

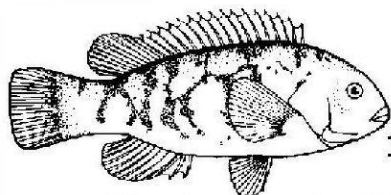
All other marine waters, open Mar. 1 - Dec. 31

PROHIBITED SPECIES
It is illegal to take, possess or land any of the following species:

IN NJ Waters: Shortnose & Atlantic Sturgeon, Basking, Bigeye Sand Tiger, Sand Tiger, Whale & White Sharks

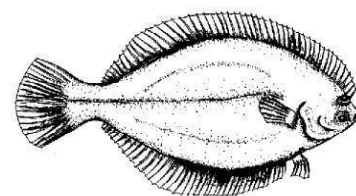
Prohibited Sharks in Federal Waters:
 HMS Permit REQUIRED - permit holders must follow Federal Regs for ALL WATERS

Atlantic Angel, Basking, Bigeye Sand Tiger, Sand Tiger, Bigeye Thresher, Bigeye sixgill, Bignose, Caribbean Reef, Caribbean sharpnose, Dusky, Galapagos, Longfin mako, Narrowtooth, Night, Sandbar (Brown Shark), Sevengill, Silky, Sixgill, Smalltail, Whale & White Sharks

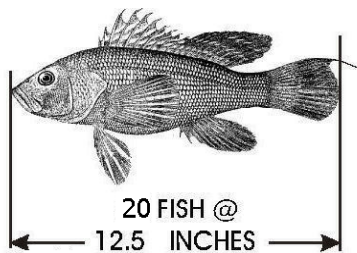


Tautog
 15 inches

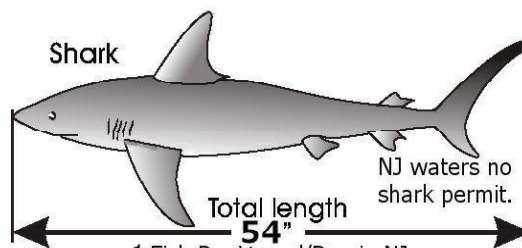
4 fish: Jan. 1 - Feb. 28
 4 fish: Apr. 1 - Apr. 30
 1 fish: Jul. 27 - Nov. 15
 4 fish: Nov. 16 - Dec. 31



Winter Flounder
 2 fish at 12 inches
 Open Season: March 23 - May 21



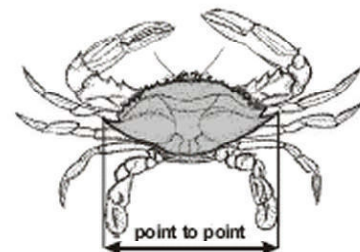
20 FISH @
 12.5 INCHES
Black Sea Bass



Shark
 Total length 54"
 1 Fish Per Vessel/Day in NJ
 Shark Seasons - See Marine Digest

NJ waters no shark permit.

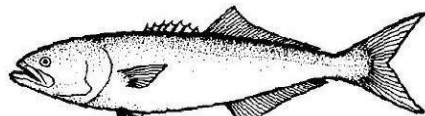
OTHER SPECIES	POSSESSION LIMIT	TOTAL LENGTH
AMERICAN EEL	50	6"
BLACK DRUM	3	16"
COBIA	2	37"
COD	NO LIMIT	21"
HADDOCK	NO LIMIT	18"
POLLOCK	NO LIMIT	19"
KING MACKEREL	3	23"
SPANISH MACKEREL	10	14"
SCUP (PORGY)	50	9"
Open Season Scup (Porgy) Jan. 1 - Feb. 28 and July 1 - Dec. 31		
SHAD	6	NO LIMIT
- Not more than 3 American Shad in Delaware Bay, River & Tributaries - No American Shad all other waters		
RIVER HERRING	CLOSED	N/A



Blue Crab (point to point)
 peeler or shedder - 3 inches
 soft - 3 1/2 inches
 hard - 4 1/2 inches
 recreational limit - one bushel

Crab pot/Trotline Seasons:
 Delaware Bay & Tributaries
 April 6 - Dec. 4

All other waters
 March 15 - Nov. 30



Bluefish
 15 fish no minimum size
 Open Season: Jan. 1 - Dec. 31



REMEMBER TO REGISTER BEFORE YOU FISH!
 IT'S FREE!
 SALTWATERREGISTRY.NJ.GOV

Scott's Bait & Tackle
 945 Radio Road
 Tuckerton NJ 08087
 (609) 296-1300

www.pennparts.com
 www.scottsb.com